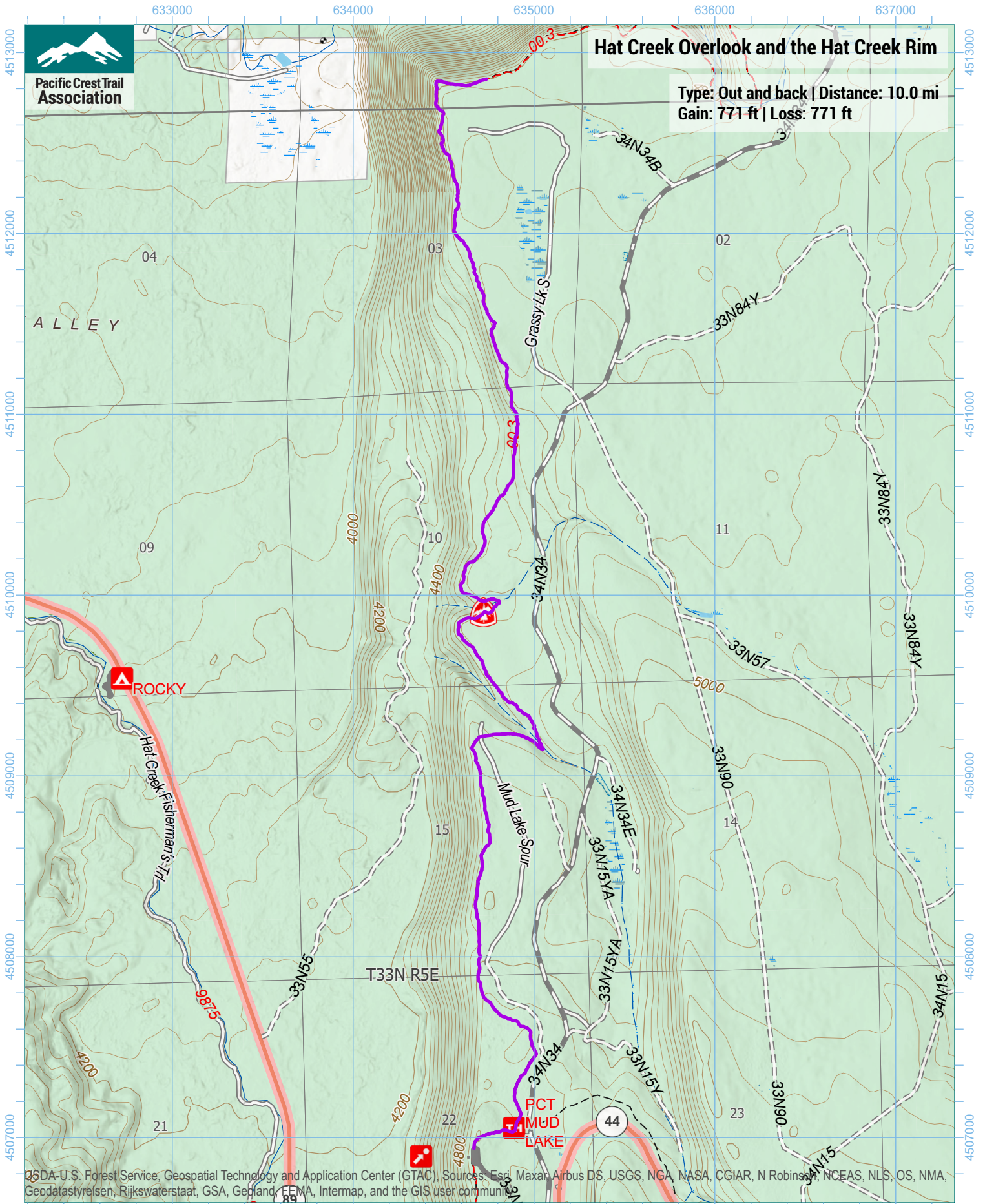


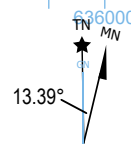
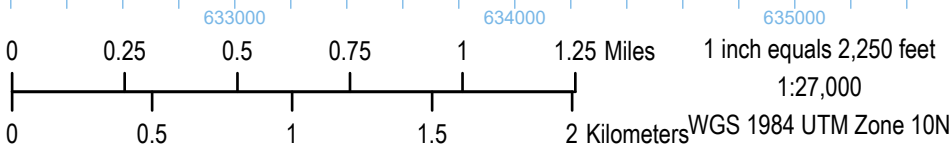


Hat Creek Overlook and the Hat Creek Rim

Type: Out and back | Distance: 10.0 mi
Gain: 771 ft | Loss: 771 ft



© 2015 USDA-U.S. Forest Service, Geospatial Technology and Application Center (GTAC). Sources: Esri, Maxar, Airbus DS, USGS, NGA, NASA, CGIAR, N Robinson, NCEAS, NLS, OS, NMA, Geodätystyrelsen, Rijkswaterstaat, GSA, Geoland, FEMA, Intermap, and the GIS user community



Trip data by PCTA
Basemap by US Forest Service
Contour interval: 40ft